

# 2013 Trial Overview

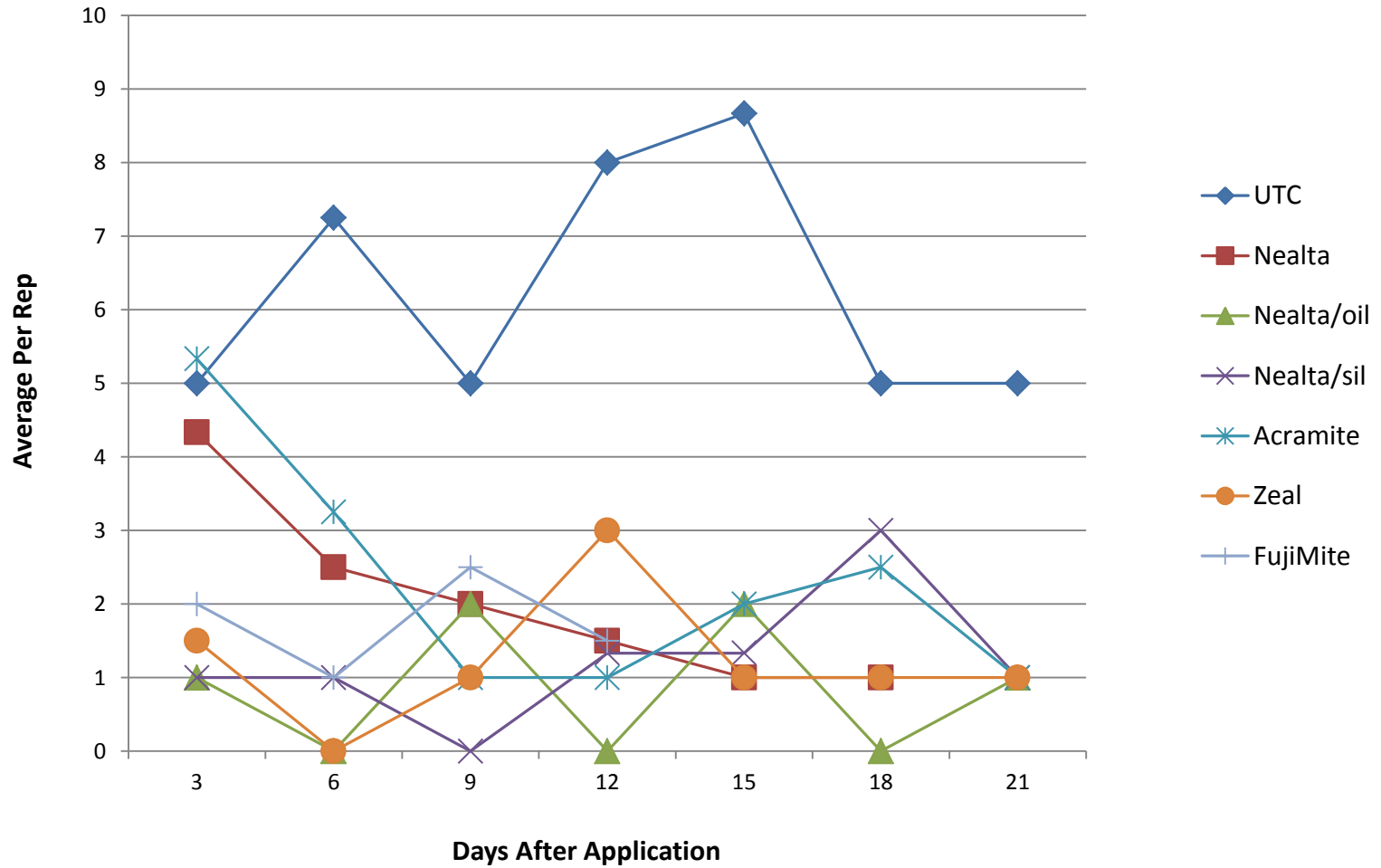
Drew Hubbard, GSL



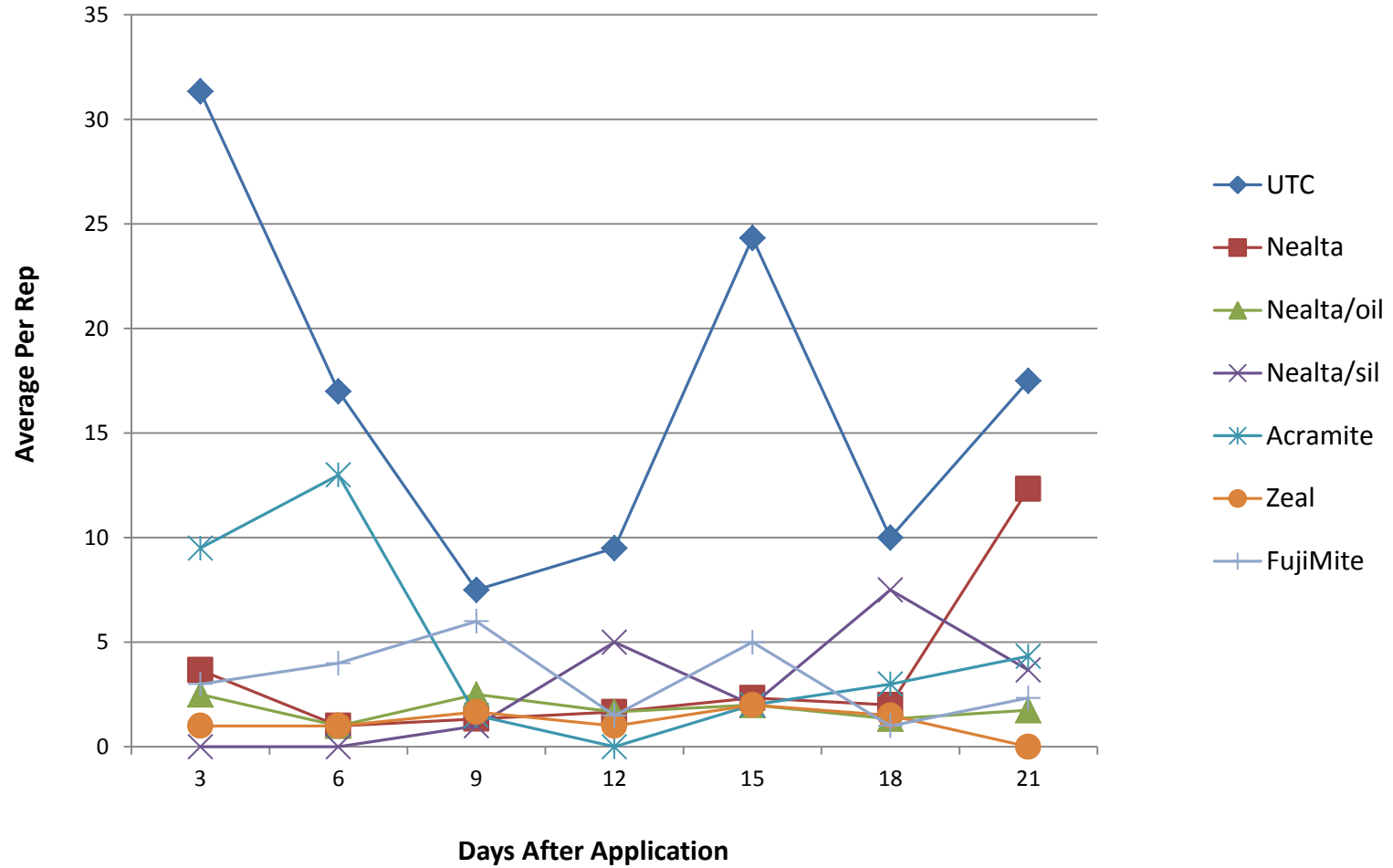
# Nealta

- New chemical coming from BASF
- Miticide
- Protectant
- Coverage will be key
- Labeled on tree fruit
- Likely 2 seasons away from release
- Trial on Pear outside Yakima, WA

### Adult TSSM Populations



## Nymph TSSM Populations



# Results

- Grower rarely applies Miticides, so good population for comparisons of chemistries
  - All treatments gave good suppression thru 18 days
  - No phyto could be seen on fruit or foliage
- \*Zeal treatment & UTC checked at 28d with continued residual

# Pear Thinning

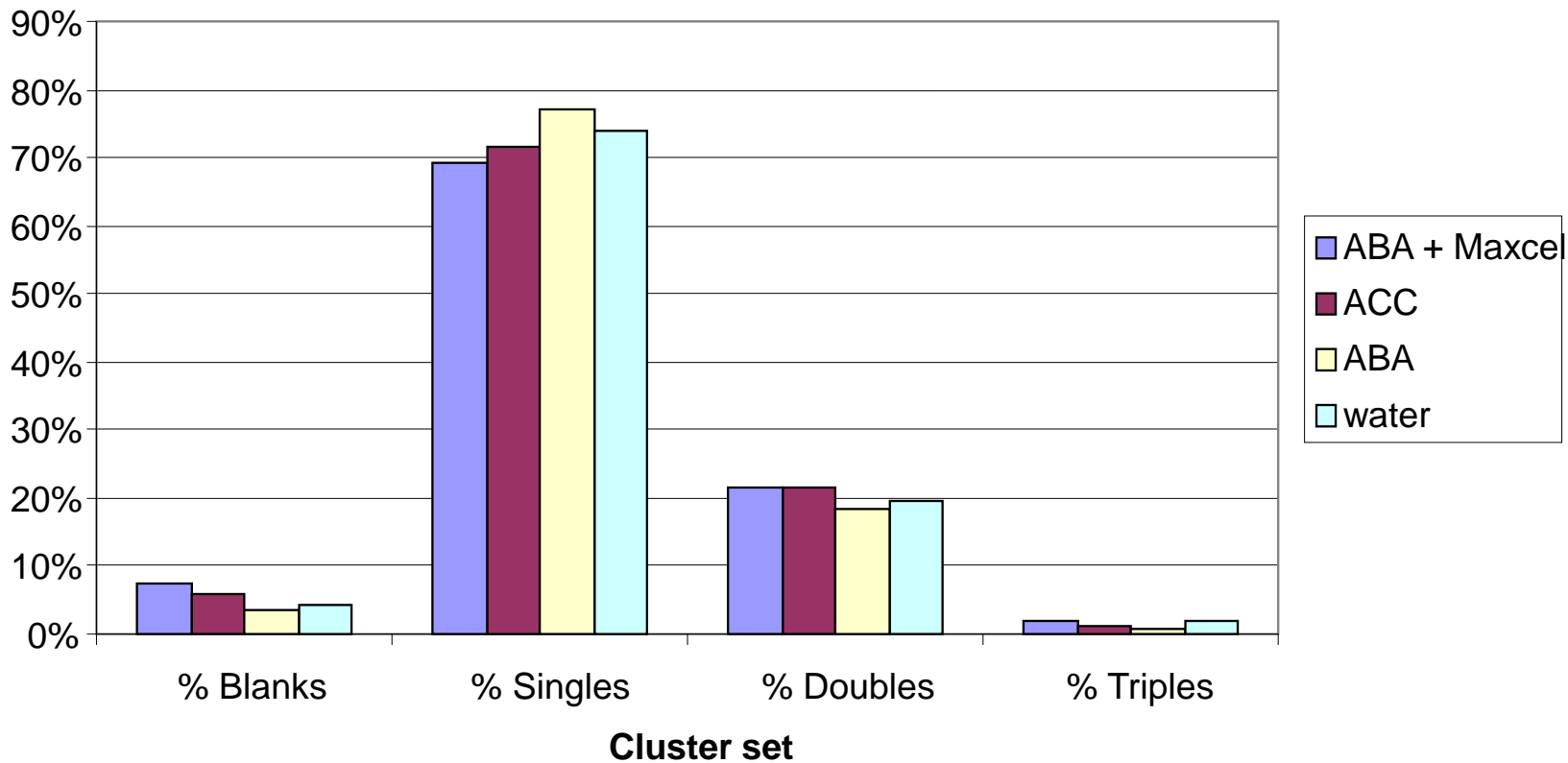
- **'Bartlett'** Pear outside Bridgeport, WA
- Valent Thinning Products
- Protone (ABA)
  - Tree fruit label being sought
- Combinations with MaxCel
- Also a new chemical (ACC)
  - No name set

# Timings & Rates

Treat	Rate	Timing
ABA + Maxcel	300ppm/100ppm	10-12mm
ACC	300ppm	18-20mm
ABA	300ppm	10-12mm

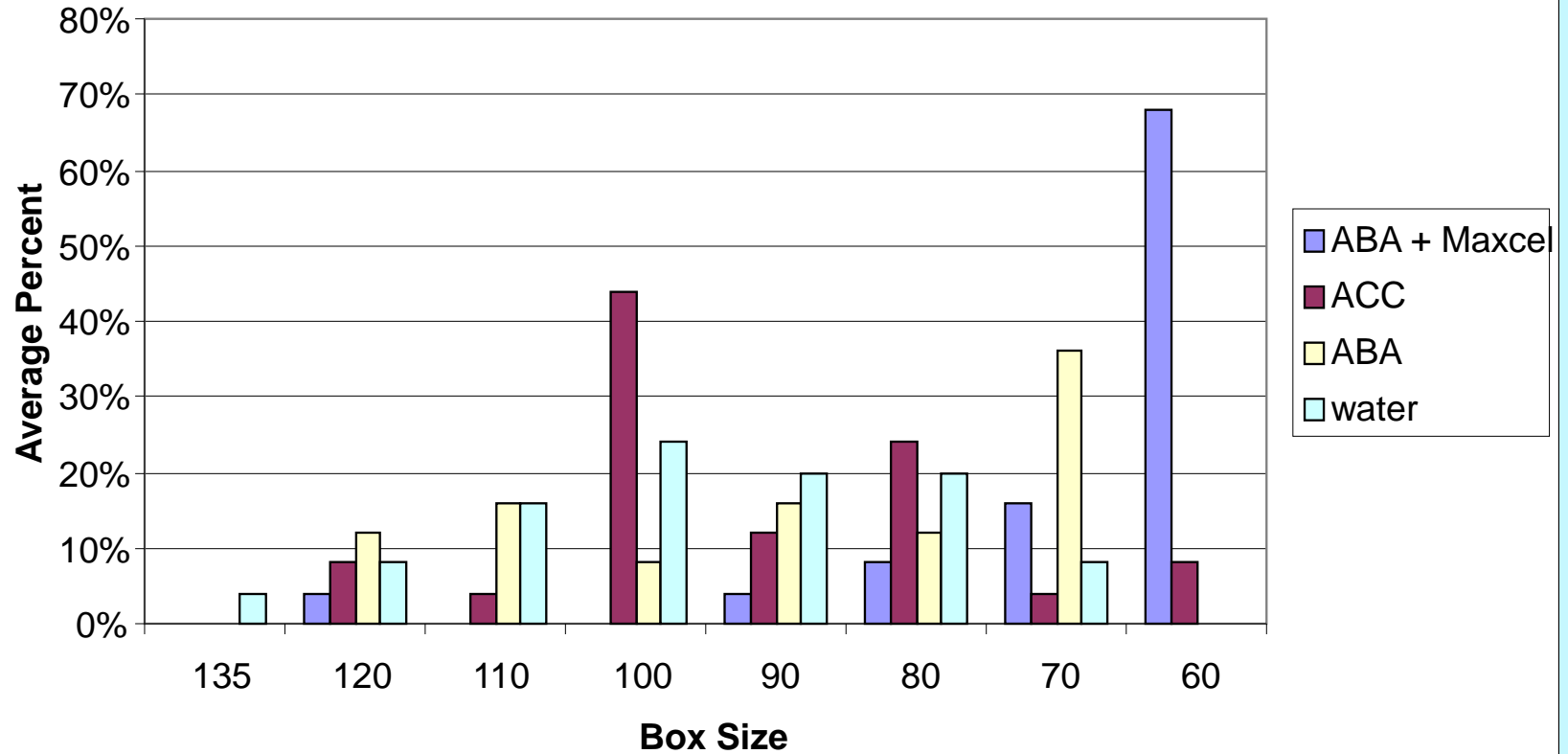
\*All treatments were applied at a rate of 150 GPA

## Valent Pear Thinning Trial 2013





# Valent Pear Thinning Trial 2013



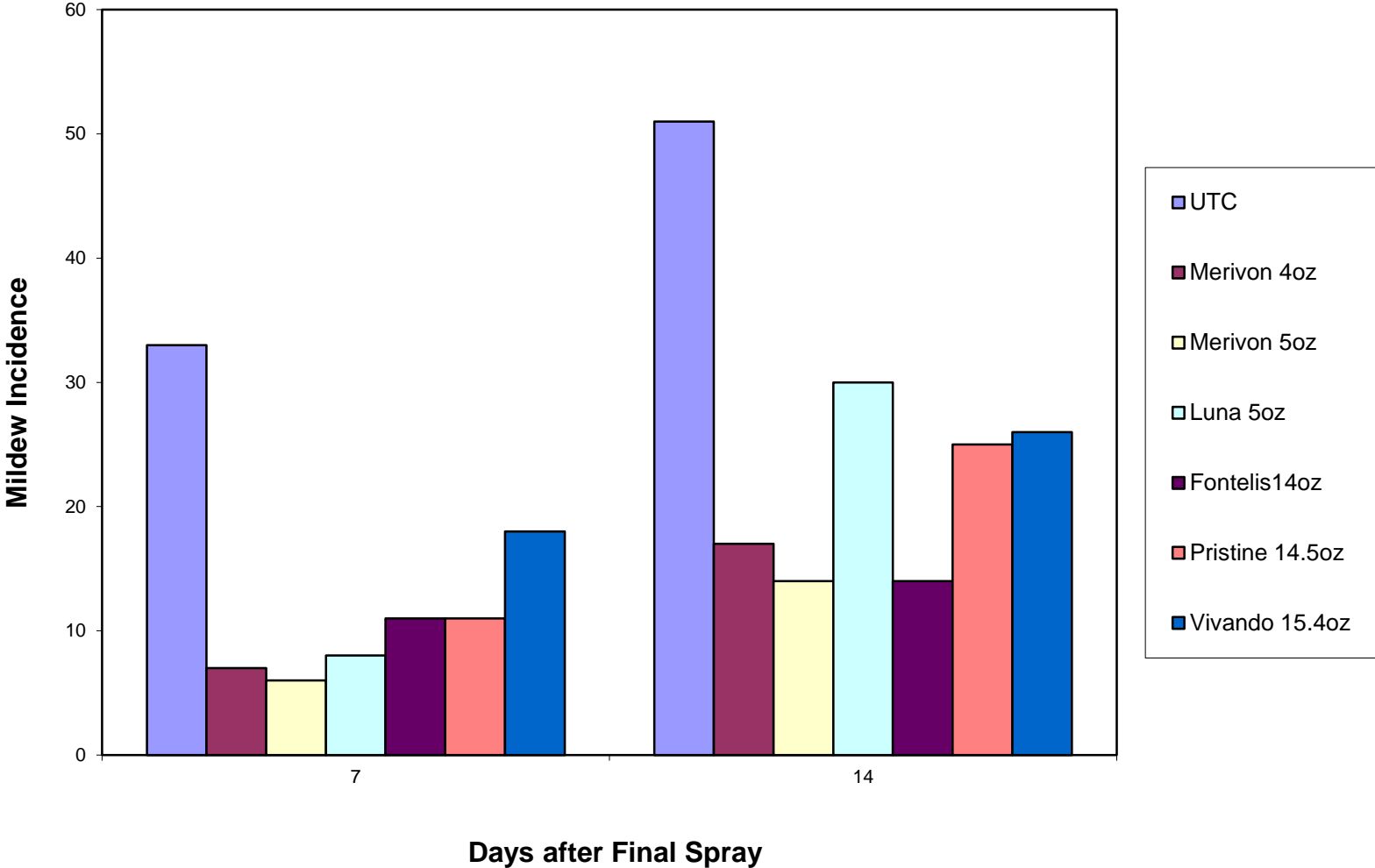
# Results

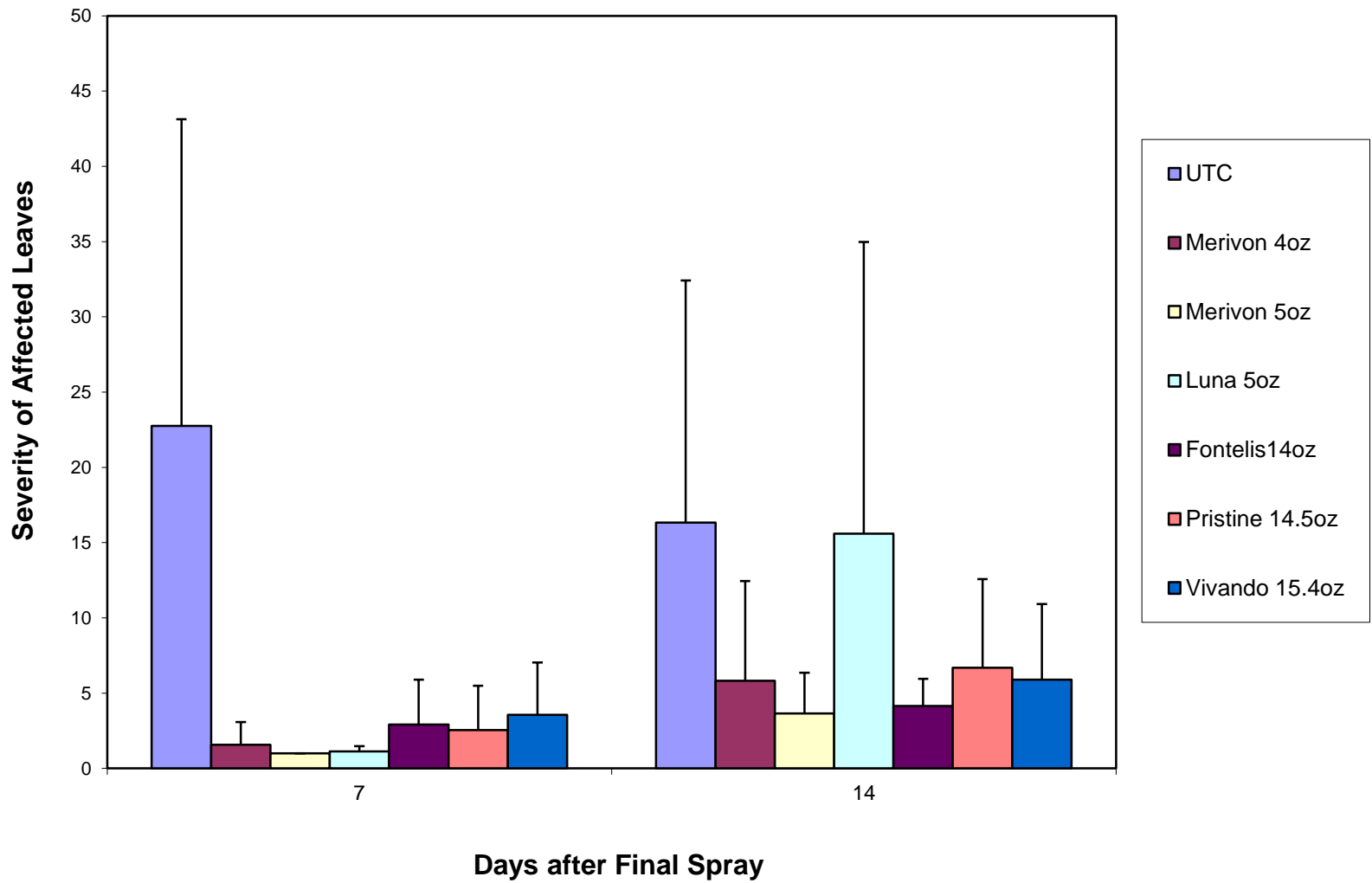
- Not a huge difference between treatments as far as fruit/cluster
- Size was the take home result from this trial
- ABA/MaxCel appears to be a sizing superstar
- ACC is a potential “emergency thinner” at 18-20mm
  - Not very selective

# Merivon

- Powdery Mildew on '**Sweetheart**' Cherry
- The Dalles, OR
- 3 sequential applications (begin @ straw)
- 10 day intervals

### Fungicide Efficacy on Cherry Mildew





# Results

- From 7 days after application, Merivon, Fontelis and Luna suppress the best
- After 14 days, more differences are apparent
  - Merivon & Fontelis appear to have the best residual
- Vivando is a FRAC U8
  - Good rotation for resistance management

# Bacterial Canker Suppression

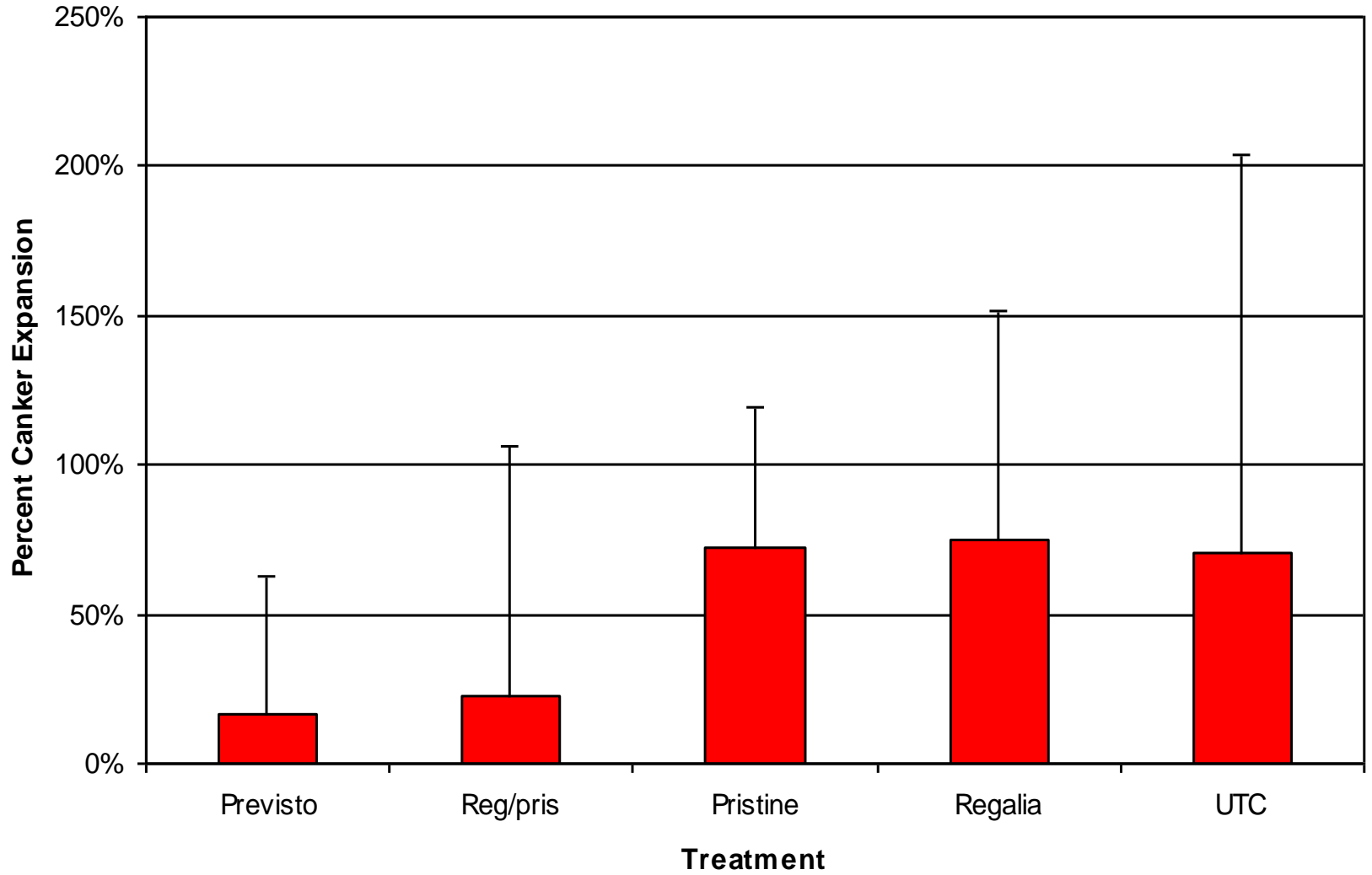
- Spring applications beginning at Bud Break
- Trying to suppress spring infections
- Various products tested
  - Previsto
  - Regalia, alone & tank mixes
- Applied every 2 weeks (total of 4 applications)
- **'Benton'** cherry in the Dalles, OR

# Treatments & Timings

Treatment	Product(s)	Rate	Application Date			
			13-Apr	27-Apr	9-May	20-May
1	Previsto	32oz	X	X	X	X
2	Regalia	64oz	X	X	X	X
	Pristine	14.5oz	X	---	X	---
3	Pristine	14.5oz	X	---	X	---
4	Regalia	64oz	X	X	X	X
5	UTC	---	---	---	---	---



# Canker Expansion



# Results

- No phyto on fruit or foliage could be seen
- Young trees, so crop was limited, but they did receive spray
- Uses for Regalia & Previsto will continue to be explored

Questions?