



Data generated by Todd Einhorn and David Gibeaut, Oregon State University. Questions:
todd.einhorn@oregonstate.edu or david.gibeaut@oregonstate.edu

Bud Stage	Phenology Description	Critical temperatures (F°)		
		10% bud kill	50% bud kill	90% bud kill
0	dormant	3	-4	-21
1	first swell	15	4	-7
2	side green	25	13	2
3	green tip	29	18	7
4	tight cluster	29	22	16
5	open cluster	29	24	19
6	first white	29	24	19
7	balloon stage	29	25	22
8	full bloom	29	25	22
9	post-bloom	29	26	23



Stage 0



Stage 0 to 1



Stage 2



Stage 2 to 3



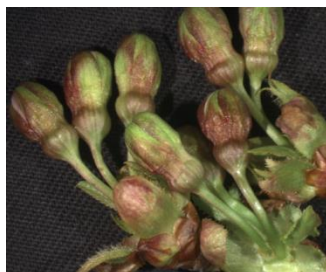
Stage 3



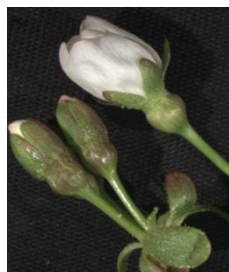
Stage 4



Stage 4 to 5 to 6



Stage 5



Stage 6 to 7



Stage 7 to 8



Stage 9

This document is a DRAFT in advance of publication to provide data that facilitate 2016 frost management decisions. Critical temperature data were generated over multiple years using 'Regina', 'Skeena', 'Rainier', 'Sweetheart' & 'Bing'; for 'Regina', critical temperatures above can be reduced by ~5°F for stages 0 & 1, other cultivars could not be statistically separated. New photos are being generated and the format will be revised.